

WELCOME TO YEAR 6

Important Year

Last Year at The Raleigh

Oldest – responsibilities

Preparation for Secondary School

**Preparation for End of Key Stage
SATs**

Fun!

Staff

Teachers

Chris Tuckett

Sally Highton

Sharon Chase

Natalia Davies

Teaching Assistants

Katy Dowling

Helen Foran

Liz Sandford

Curriculum

Autumn

Exploration – Aztecs and Tudors

Light

Evolution

Spring

Exploration – modern explorers

Living things and their habitats

Animals including humans

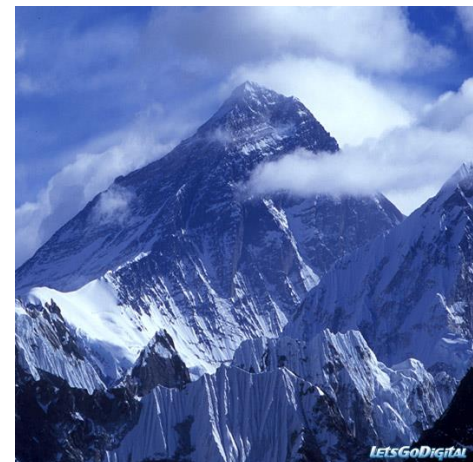
Summer

Changes – moving on

History of change in the local area

Electricity and Inheritance

Puberty education



Literacy

Two mixed-ability groups

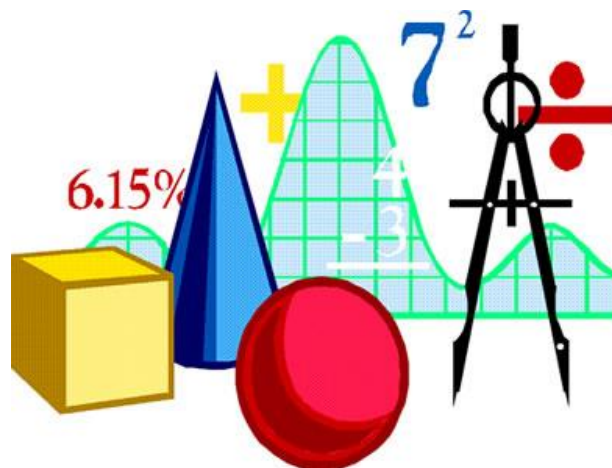
**Lots of Writing – all kinds
of fiction and non –
fiction styles**

**Grammar – punctuation,
spelling rules**

**Reading – Class texts,
comprehension**



Maths



Ability Group 3 ways across the year group during the week

In a group which we think most appropriate

Revision of Key Concepts

Problem Solving

Coming up This Term



Bringing Mexico and the Aztecs
to life in schools and the community.

**Mexicolore Workshop
(Wednesday 28th Sept.)**

**Mary Rose visit
(Wednesday 19th Oct.)**

Special Friends

Young Apprentice Project



Homework



Two homework tasks set every week, each lasting 40 minutes.

Occasionally a project may be set to take a number of weeks.

Written in homework diary – please sign at the end of each week – checked on Mondays

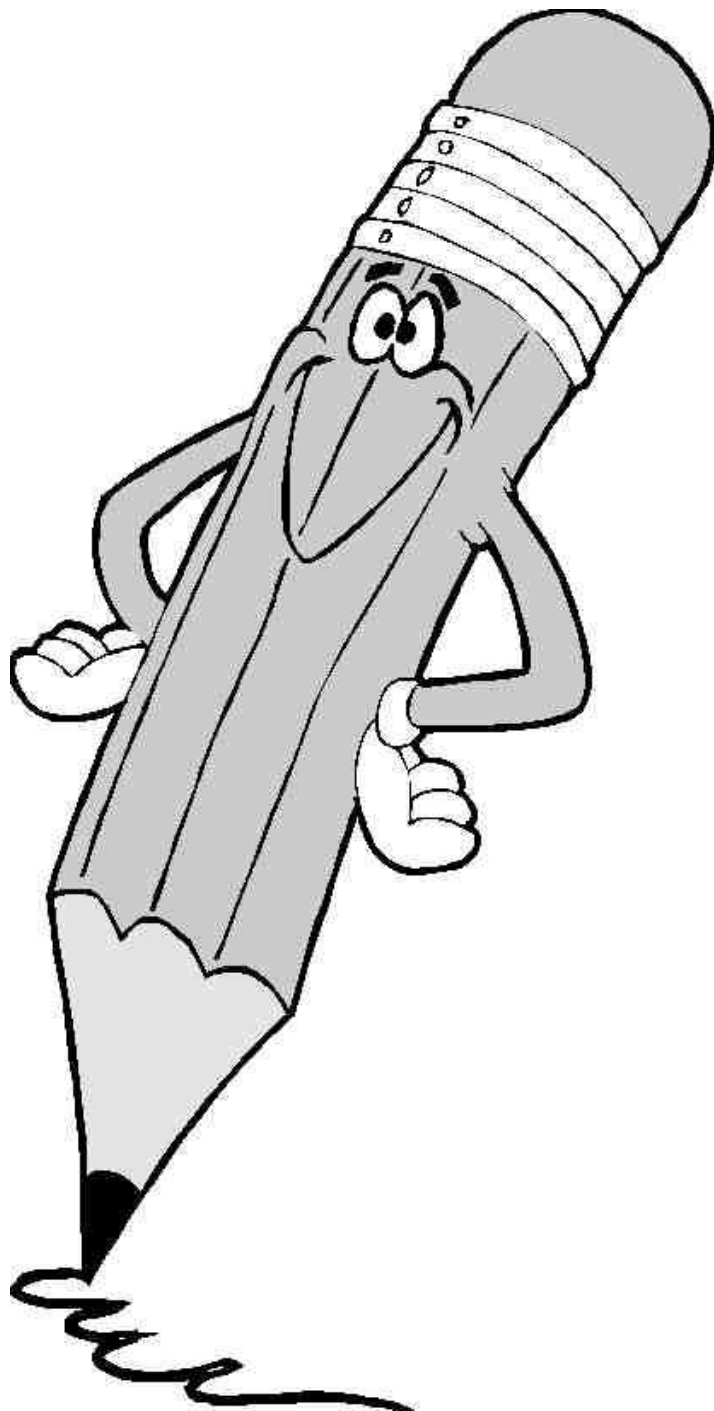
Mon – Maths/ Reading/ Spelling

Tues – Reading/ Spelling

Wed – Reading/ Spelling

Thurs – Literacy or Topic/ Reading/ Spelling

Fri – Reading/ Spelling



SATs

Week of May 8th-12th

Will be well prepared

**Please do not take
your child out of
school that week**

Equipment

Fully equipped pencil case



Games kit

Tracksuit for cold weather with trainers for the field

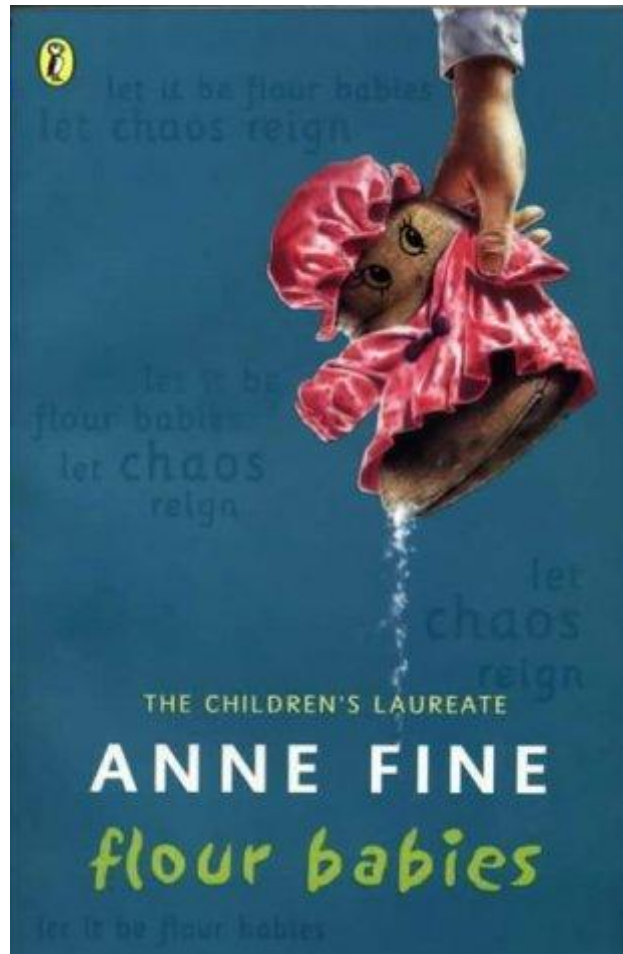


Water bottle

Transfer to Secondary School

Apply on line by
31st October 2016 at the very
latest!

Looking ahead to Summer term



SATs

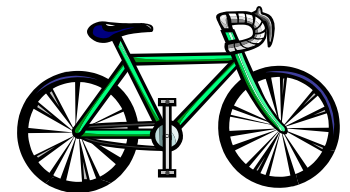
Flour Babies

Puberty Education

**End of Year Leavers'
Evening**

PGL Residential Trip

Bikeability



Chateau de Grande Romaine

Venue for Year 6 Trip

The PGL centre 'CGR' near Paris





Château de Grande Romaine - Paris

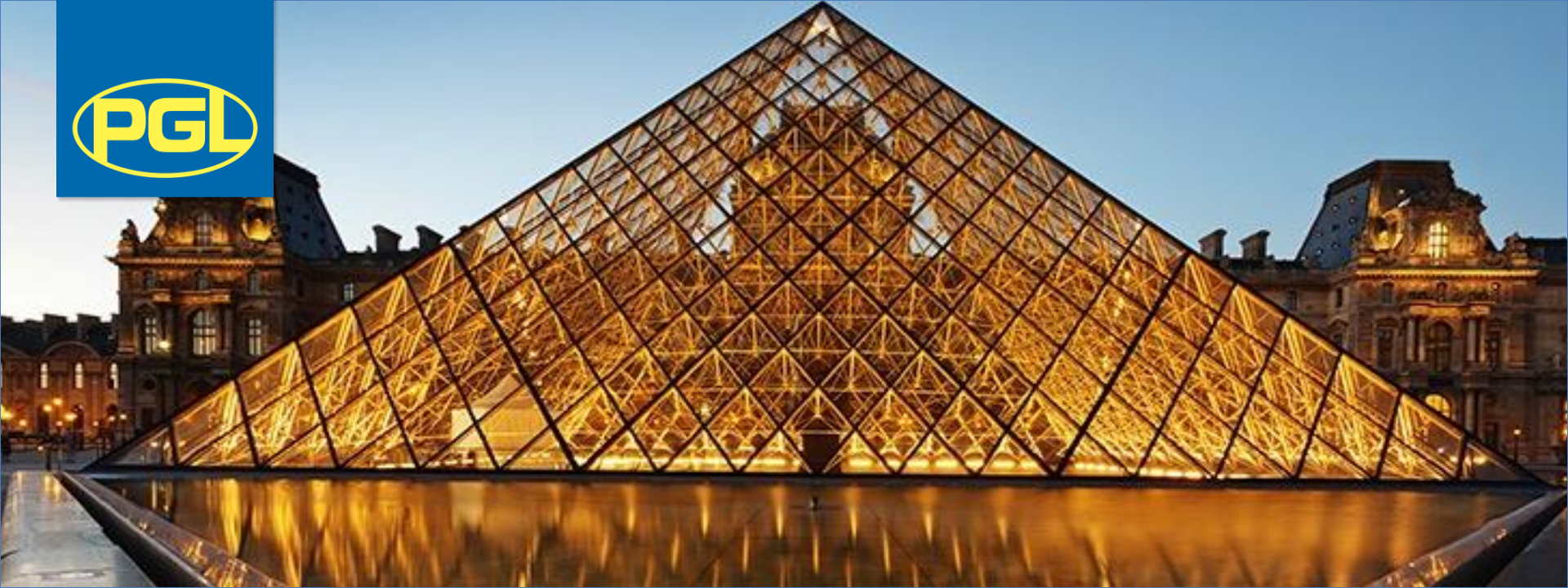
- Rural setting, just 20 miles from Paris
- Opportunity to use French in real-life situations
- Authentic French experience with the comfort of your own home
- Owned & managed by PGL





Adventure activities

- Abseiling
- Archery
- Climbing
- Low Ropes Course
- Orienteering
- Team Challenge
- Trapeze
- Zip Wire



Popular excursions

- Notre Dame Cathédrale
- Sacré Coeur & Montmartre
 - The Louvre
 - Eiffel Tower
- Seine River Cruise-Bateaux Parisiens



Evening entertainment

- Snail tasting
- Crêpe making
- Boules tournament
- Disco
- Mini Olympics
- Talent Show
- Passeport au Monde



Accommodation and facilities

- Comfortable 4-8 bunk-bedded rooms
 - En suite facilities
- Extensive grounds for ballsports
 - Heated outdoor pool
 - Traditional boules pitch
- Football pitches & basketball courts
- On-site adventure activities
 - Disco
 - Shop
- Games room & cinema room
 - Classrooms
 - WiFi



Catering and dietary needs

- 3 nutritious, balanced meals per day
 - Self-service salad bar
 - Vegetarian option
- Opportunity to try local dishes – including snails!
 - Sample menus available online: www.pgl.co.uk